

# JS 10-305 G10

Qmax 600 m<sup>3</sup>/h - 10000 l/min (2642 USgpm) - Hmax 39 m (128 ft)

Code 10009549



Indicative picture of the product

## Self-priming centrifugal bare shaft pump

### Characteristics

The J series self-priming centrifugal pumps are used in applications where a rapid priming capacity is required from demanding suction heights combined with the ability to transfer and manage polluted fluids, dirty and abrasives with suspended large diameter solids. The system is based on an inspectable pump casing which also acts as a water tank allowing a first quick priming without auxiliary systems, simplifying management of the system and reducing the time for maintenance. Within the physically permitted suction height limits, J pumps are a more comfortable and reliable solution than submersible pumps and vertical submersed impeller pumps.

### Applications

#### Industry:

clean, dirty, sandy, muddy, neutral, alkaline, acidic liquids; low viscous petroleum products, solvents even if dirty; milk of lime, caustic soda; washing, cooling, recirculation, smoke scrubbing.

#### Treatment:

pumping polluted corrosive wastewater containing sand, mud or solids in suspension; dosing neutralizing liquids; pumping out settled sludge.

#### Naval:

loading and unloading; bilge pumping; washing, fire-fighting, stripping, sanitary duty and circulation.

#### Agriculture:

surface irrigation; liquid manure oxygenation; transfer and spraying liquid manure or fertilizers; distribution of liquid animal feed; transfer of wine must; washing.

### Product Data

Suction port

**Flanged - DN250 DI1882 TL (solder)**

Delivery port

**Flanged - DN250 DI1882 TL (solder)**

Qmax

**600 m<sup>3</sup>/h - 10000 l/min (2642 USgpm)**

Hmax

**39 m (128 ft)**

Solids handling

**76 mm (3")**

Weight

**550 kg (1212 lb)**

EX version



Pump with dedicated code, including thermowell predisposition for temperature sensor and glass oiler for mechanical seal quench fluid, according to **ATEX 2014/34/EU**.

### Benefits

#### 1) Rapid self-priming

Without foot valve up to a height of 7.5 m (24.5 ft)

#### 2) High resistance

To abrasive liquids which are turbid and sandy

#### 3) Semi-open impeller

High thickness casting impact resistant

#### 4) Wear plate/plates

Easily replaceable cast iron wear plate/plates

#### 5) Easy inspection and cleaning

Removable front covers for access to the impeller

Varisco S.r.l. has certified its Quality, Environment and Safety Management System in accordance with the requirements of the international standard ISO 9001-14001-45001, recognized by the Lloyd Register.

Specification is subject to change without prior notice. Please check with your Varisco representative for the latest specifications.

Document release date: February 15<sup>th</sup> 2024

# JS 10-305 G10

## PERFORMANCE CURVES



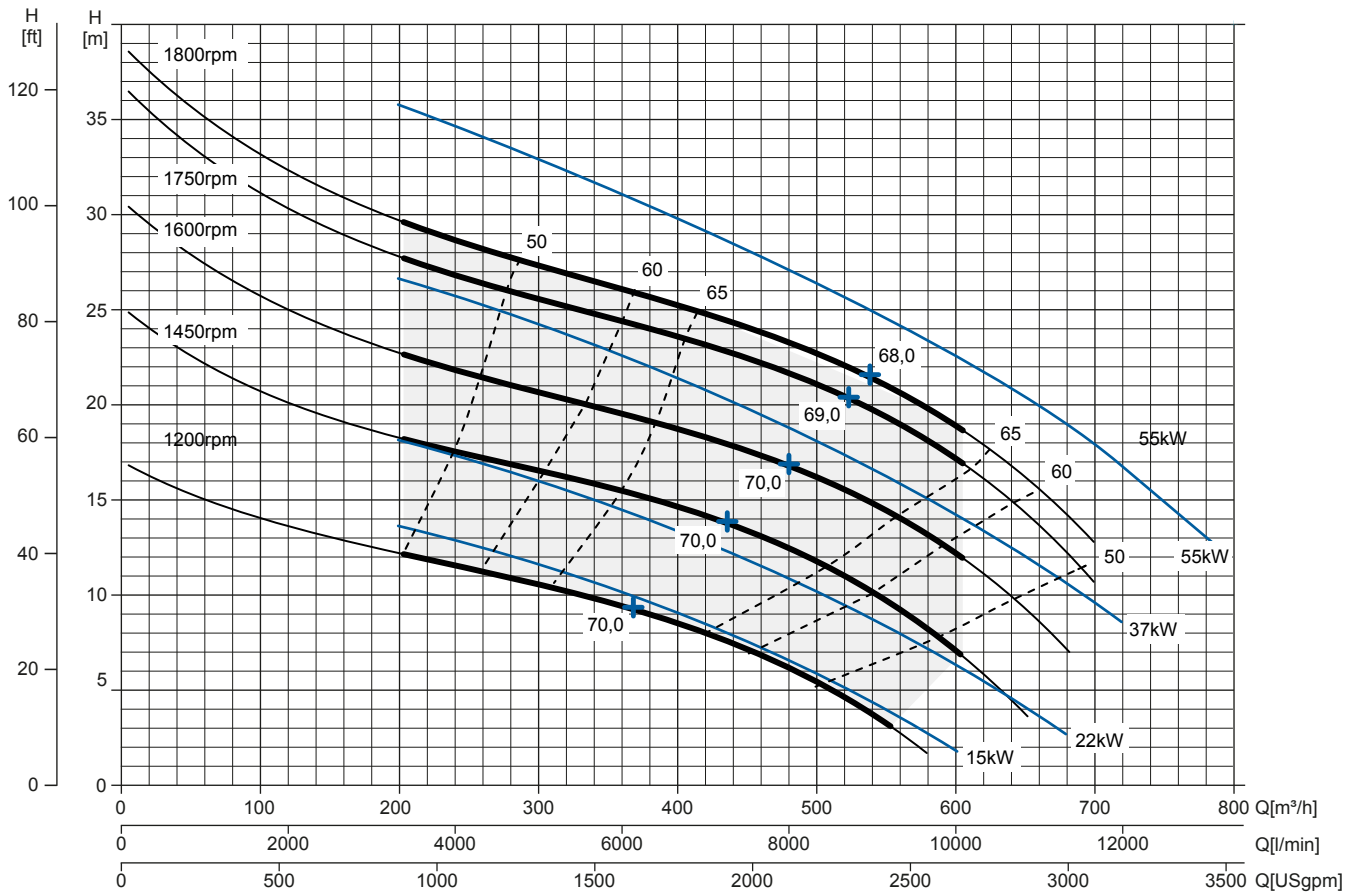
Test according to **UNI EN ISO 9906 standard - level 2B**

Installed power: **30 kW - 40 HP (1.450 rpm)**

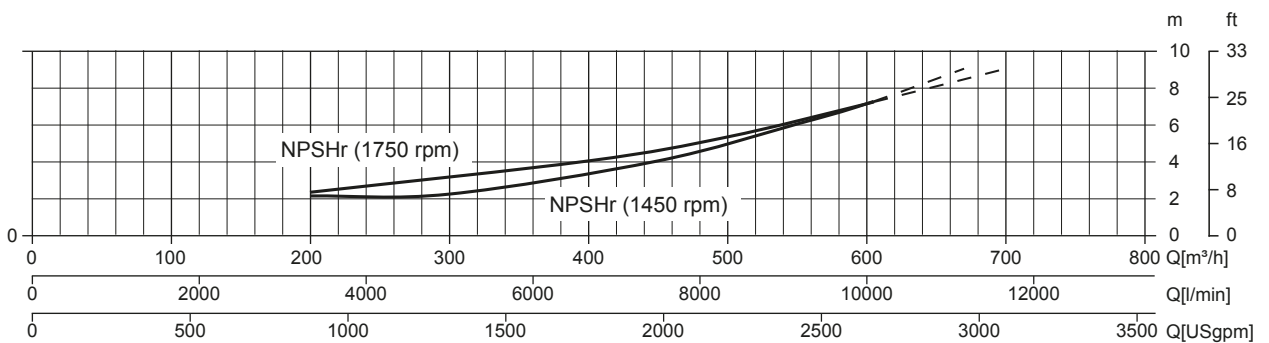
Test liquid: **clean water, density 1.000 kg/m<sup>3</sup>**

Spherical solids handling: **D.76 mm (3")**

### Multiple Speed Curve



### NPSHr Curve



# JS 10-305 G10

## TECHNICAL DATA

### Pump

|                  |  |
|------------------|--|
| Pump model       | JS 10-305 G10  |
| Qmax [1.800 rpm] | 600 m <sup>3</sup> /h - 10000 l/min (2642 USgpm)                   |
| Hmax [1.800 rpm] | 39 m (128 ft)  |
| Suction port     | Flanged - DN250 DI1882 TL (solder)                                 |
| Delivery port    | Flanged - DN250 DI1882 TL (solder)                                 |
| Impeller type    | Semi-open, 2 vanes   |
| Solids handling  | 76 mm (3")   |
| Casing           | EN 1561 EN-GJL-200 cast iron                                       |
| Impeller         | EN 1563 EN-GJS-400 cast iron                                       |
| Wear plate       | EN 1561 EN-GJL-200 rubberized cast iron                            |
| Non-return valve | check-valve, NBR   |
| Shaft            | 39NiCrMo3 EN 10083-3 steel   |
| Mechanical seal  | Silicon carbide / Silicon carbide                                  |
| Elastomers       | FKM  |
| Lubrication      | Grease   |
| Bearing bracket  | EN 1561 EN-GJL-200 cast iron, with grease lubricated ball bearings |

### Arrangement

|                         |  |
|-------------------------|--|
| Model                   | Bare shaft                                       |
| Dimensions (L x W x H)* | 1292 x 758 x 942 mm (50,9 x 29,8 x 37")          |
| Coating                 | Polyurethane enamel, average thickness of 100 µm |
| Color                   | RAL 5010 blue (standard)                         |
| Height connection       | 0,69 m (2,3 ft)                                  |

\*without flanged ports

### Optionals

|   |  |
|---|--|
| Flanged ports DN250 PN16 EN1092-2 Type B      | Complete pump set code available on request  |
| Flanged ports 10" ANSI B16.1 Class 125 R.F.   | Complete pump set code available on request  |
| Automatic mechanical seal greaser             | Code: 10008316                               |
| Thermocouple temperature sensor for ATEX pump | TC - Range temperature from 0 up to 300°C    |
| Temperature sensors for ATEX pump             | PT100 - Range temperature from 0 up to 300°C |

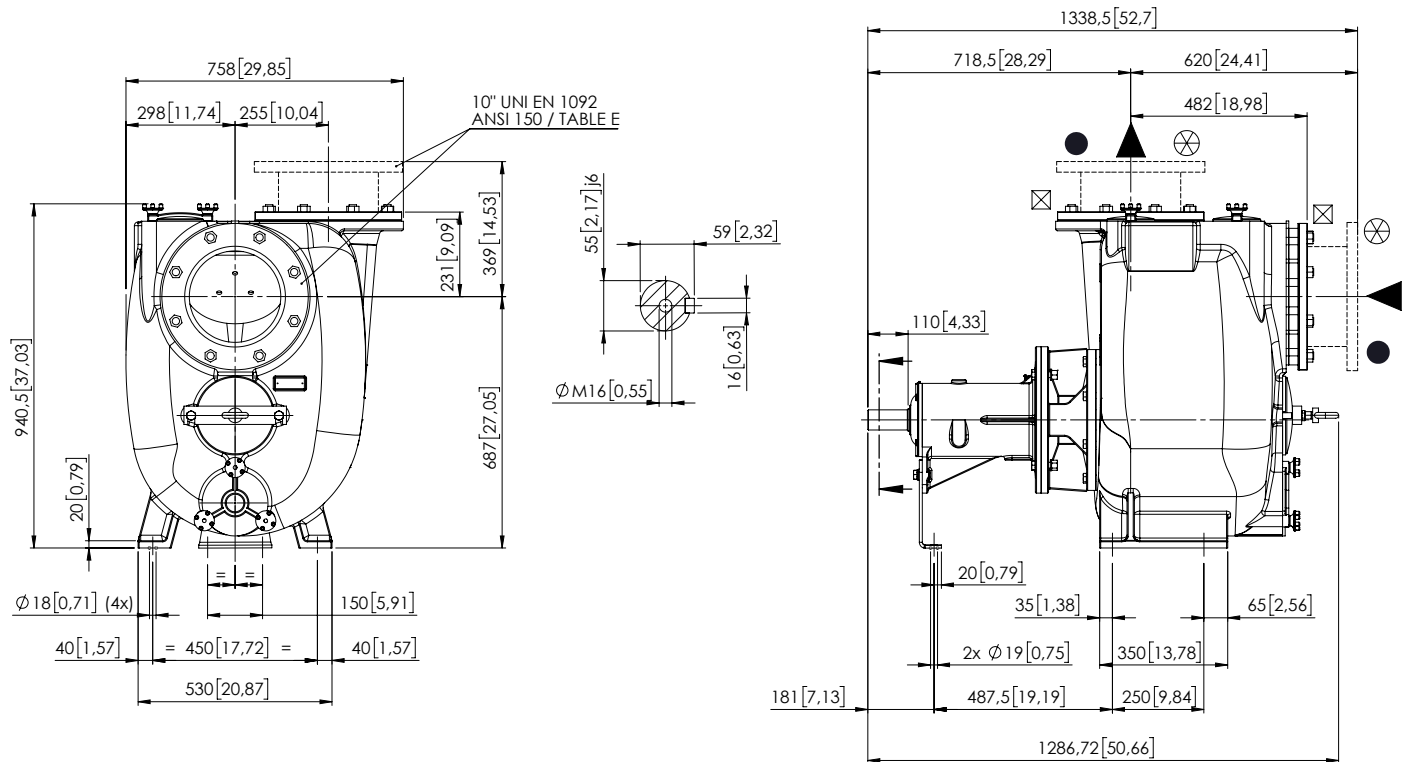
### Weight

|                               |                  |
|-------------------------------|------------------|
| Net weight                    | 550 kg (1212 lb) |
| Gross weight (pump + packing) | 580 kg (1278 lb) |

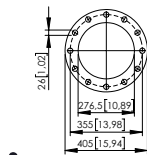
# JS 10-305 G10

## DIMENSIONS

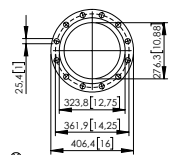
mm [in]



FLANGIATURA SU RICHIESTA / FLANGES ON REQUEST

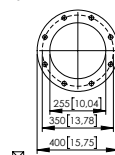


DN 250 PN 16 EN 1092-2 TYPE B



8" ANSI B16.1 CLASS 125 R.F.

FLANGIATURA STANDARD / STANDARD FLANGES



DN 250 D.I.1882 TL

## PACKAGING DIMENSIONS

### Dimensions

JS 10-305 G10 (L x W x H)  
Gross weight (pump + packing)

1200 x 1000 x 1150 mm  
580 kg (1278 lb)

